

ALLDAY
& MILLER



The Greenway, Ickenham, UB10 8LT
£3,700 Per Month

 4  3  3  C



The Greenway, Ickenham, UB10 8LT

£3,700 Per Month

- Exquisite Four Bedroom Detached
- Three Reception Rooms
- Stylish Interiors Throughout
- Nearby to Highly Regarded Schools
- Carriage Driveway
- Three Bathrooms
- Master Bedroom with En Suite
- Moments from Ickenham Village
- Open Plan Kitchen Diner
- Walking Distance to Ickenham & West Ruislip Station

Description

This stunning four bedroom detached home measuring 1907 Sq Ft comprises of an inviting entrance hall, spacious reception room, downstairs family bathroom, a further reception, open plan kitchen diner with a large island breakfast bar and bifold doors overlooking views of the rear garden. The first floor boasts four well proportioned bedrooms with the master benefiting from a stylish en suite and ample fitted wardrobes.

A front carriage driveway creating space for off street parking for multiple vehicles. To the rear enjoys a private garden with a lawn and patio area perfect for outside dining and entertaining.

Situation

The Greenway is a quiet road in a great location in Ickenham close to a number of local amenities including West Ruislip train station is a short walk away and this is serviced by the Central Line and Chiltern Line, servicing London and the home counties. Ickenham high street is just a short distance away with its variety of local shops, cafes, coffee shops and restaurants. The A40 and M25 are in short driving distance providing excellent access into London and the surrounding area. Highly regarded schools in the local area including Vyners secondary school and Breakspear school.

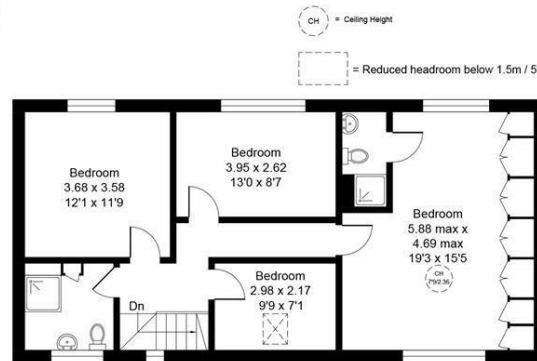
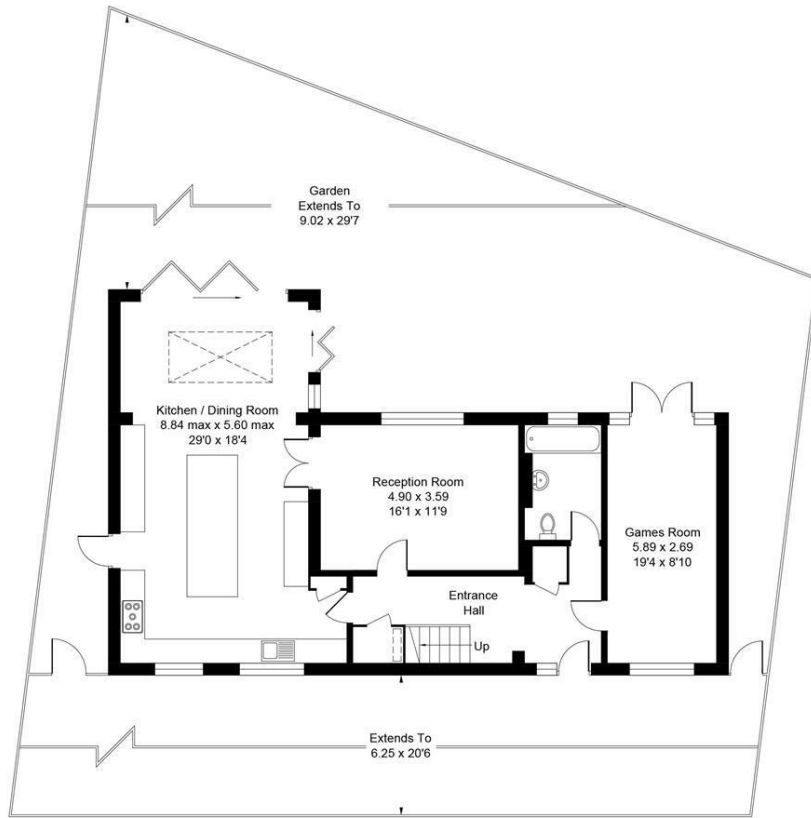


Floor Plans

The Greenway, Ickenham, Uxbridge, UB10

Approximate Area = 1907 sq ft / 177.2 sq m

For identification only - Not to scale



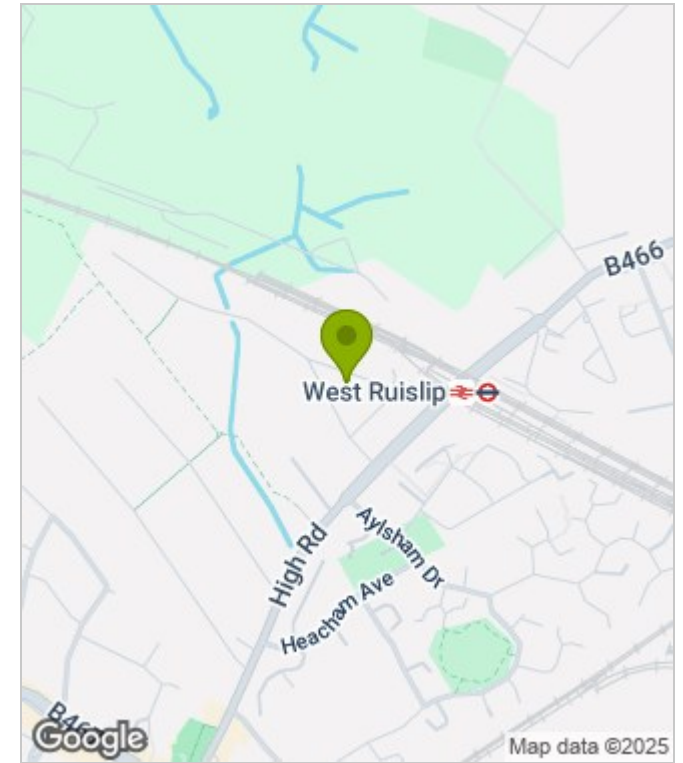
First Floor

Ground Floor

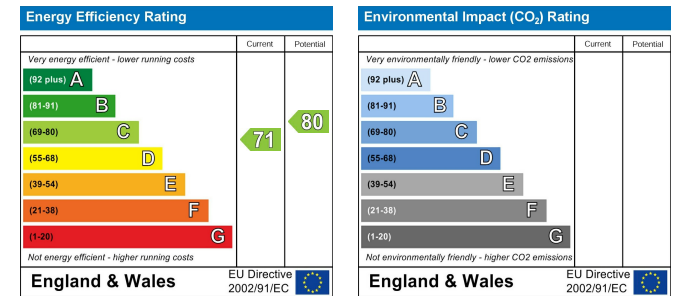
Floor plan produced in accordance with RICS Property Measurement Standards incorporating International Property Measurement Standards (IPMS2 Residential). ©Vizion Property Marketing 2024. Produced for Allday & Miller.

ALLDAY & MILLER
estate agents

Area Map



Energy Performance Graph



These particulars, whilst believed to be accurate are set out as a general outline only for guidance and do not constitute any part of an offer or contract. Intending purchasers should not rely on them as statements of representation of fact, but must satisfy themselves by inspection or otherwise as to their accuracy. No person in this firm's employment has the authority to make or give any representation or warranty in respect of the property.

www.alldayandmiller.co.uk

192 High Street, Uxbridge, Middlesex, UB8 1LB

T: 01895 641 000 | E: sales@alldayandmiller.co.uk

T: 01895 379 549 | E: lettings@alldayandmiller.co.uk